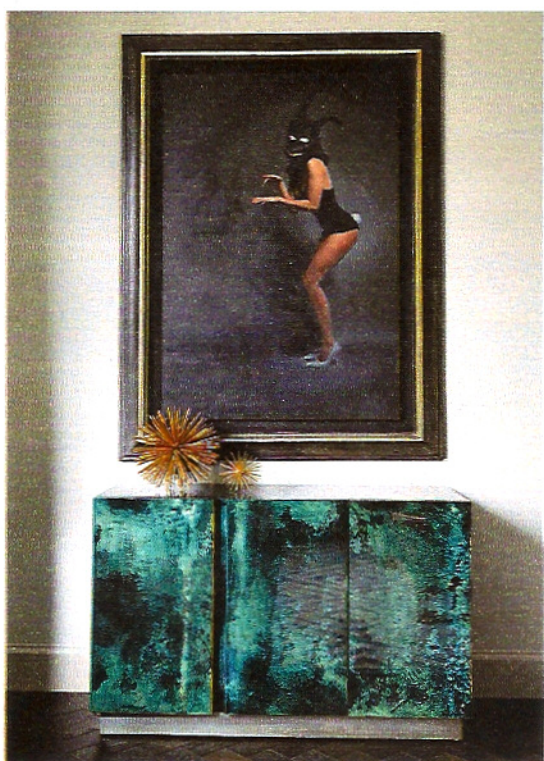


Main picture, opposite The reclaimed stone fireplace is from Lasso and the custom-antiqued mercury mirror is by Rupert Bevan. Right The star-splattered stair runner was salvaged from a rug bought from Solange Azagury-Partridge's old showroom. The walls are painted in Farrow & Ball Oval Room Blue. Below The painting, Frankie, is by Sally Jane Fuerst. Bottom The 1970s chairs in the master bedroom have been reupholstered in velvet by Dedar



The fashion writer turned interior designer Trilbey Gordon scoured the world's flea markets to design a London home of eclectic glamour. By *Fiona McCarthy*

PHOTOGRAPHS: KATE MARTIN



A GOOD VINTAGE

The brief was a little bit Parisian chic, a little bit rock'n'roll — think Chateau Marmont meets Hôtel Costes," says the former Vogue fashion writer turned interior designer Trilbey Gordon of the overhaul of this three-storey Victorian terrace house in west London. As a rental property, it had been stripped of all its original features bar the turned wooden staircase, so she had carte blanche to create a new home for a property developer and his two daughters.

Unafraid of using bold colour and texture, Gordon pitted dark shades of grey and blue against velvets, silks and chenilles, and covered walls in lacquered raffia and gold-flecked-cork. With a discerning eye (and vast knowledge of vintage furniture), she scoured everywhere from the flea markets of Paris to the shops on Golborne Road, in Ladbroke Grove, and even salvaged doors from Richard Branson's house in Holland Park. She then dyed them a dark teal and fitted them with hefty vintage bronze cinema handles and studs.

The result? "A cabinet of curiosities meets gentleman's club vibe," she says. "Each piece has its own story to tell." ●

trilbeygordoninteriors.com



Main picture, left In the master bedroom, the hand-crocheted butterfly throw is by Kokon to Zai. Below Silk wall panels were hand-painted by the artist Anna Glover. Opposite, from top A reproduction 1970s sofa sits in the lounge. Custom-made brass kitchen cabinets are paired with Tiffany Blue Amazonite stone from the Marble & Granite Centre. The Willy Rizzo dining table is paired with Milo Baughman chairs



GET THE LOOK

Orchid, £240; ORCHIDYA.COM. Framed butterfly, £52; INSECTFRAME.CO.UK. Stella armchair, from £690; SOFA.COM. Carina chandelier, £999, CHARLES LETHABY; heals.com. Coral candle, £95, L'OBJET; libertylondon.com

